

Power Monitoring (RCX)

Geist's Power Monitoring PDUs provide a comprehensive remote view of your installation's power utilization. In addition to Amps, Volts, Real Power, Apparent Power, Power Factor and kWatt-Hours, these versatile units provide jacks for optional environmental monitoring. Each of these variables can play a critical role in uptime at your site in addition to insuring energy use efficiency.

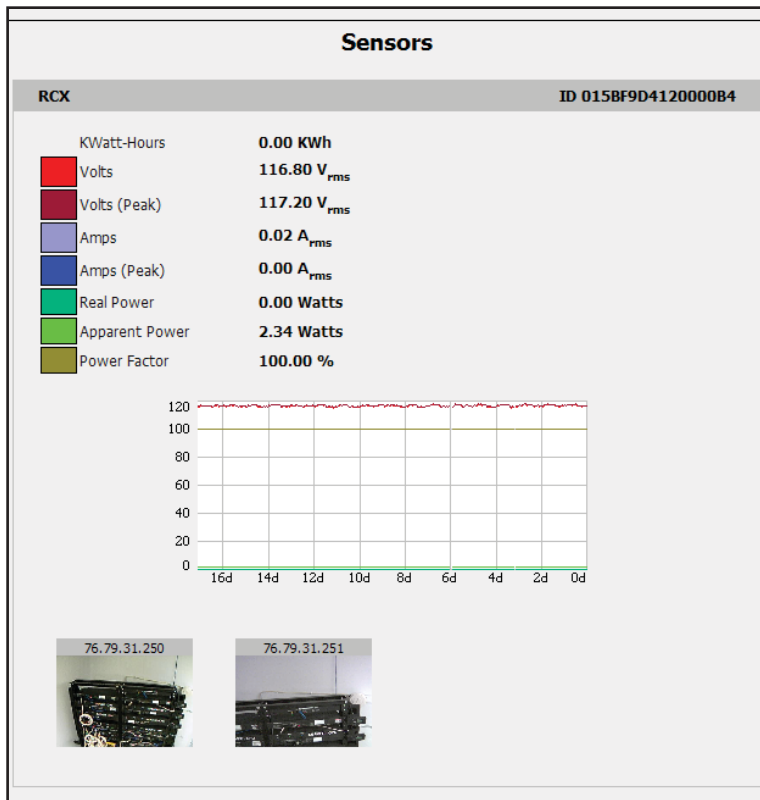
SPECIFICATION:

Ethernet Connection Jack	Software Reset Button	Internal Power Sensors
Power On Indicator	External Sensor Connection Ports	Volts RMS: 80-280 VAC
Idle Indicator	Two RJ12 Jacks	Amps RMS: 0-32A
Activity Indicator	- add up to 16 Remote Sensors	Remote Display (RSD2X8) Connection Jack
	FCC Part 15 Class A Conformance	

FEATURE	BENEFIT
Remote power monitoring	Prevent down-time with early notification of power threshold breach
2 Remote environmental sensor ports	Monitor temperature, air flow, humidity and dew point via connected sensors
Threshold alarms - remote & local	Convenient notification via e-mail, SNMP traps and/or local audible alarm via RSD
Remote LCD display (RSD)	Easily viewable power data via RSD
Interfaces with IP web cameras	Visual monitoring of cabinet or computer room
Accessible via any web browser	Easy installation & maintenance - No external software View data graphs and analyze historical logs

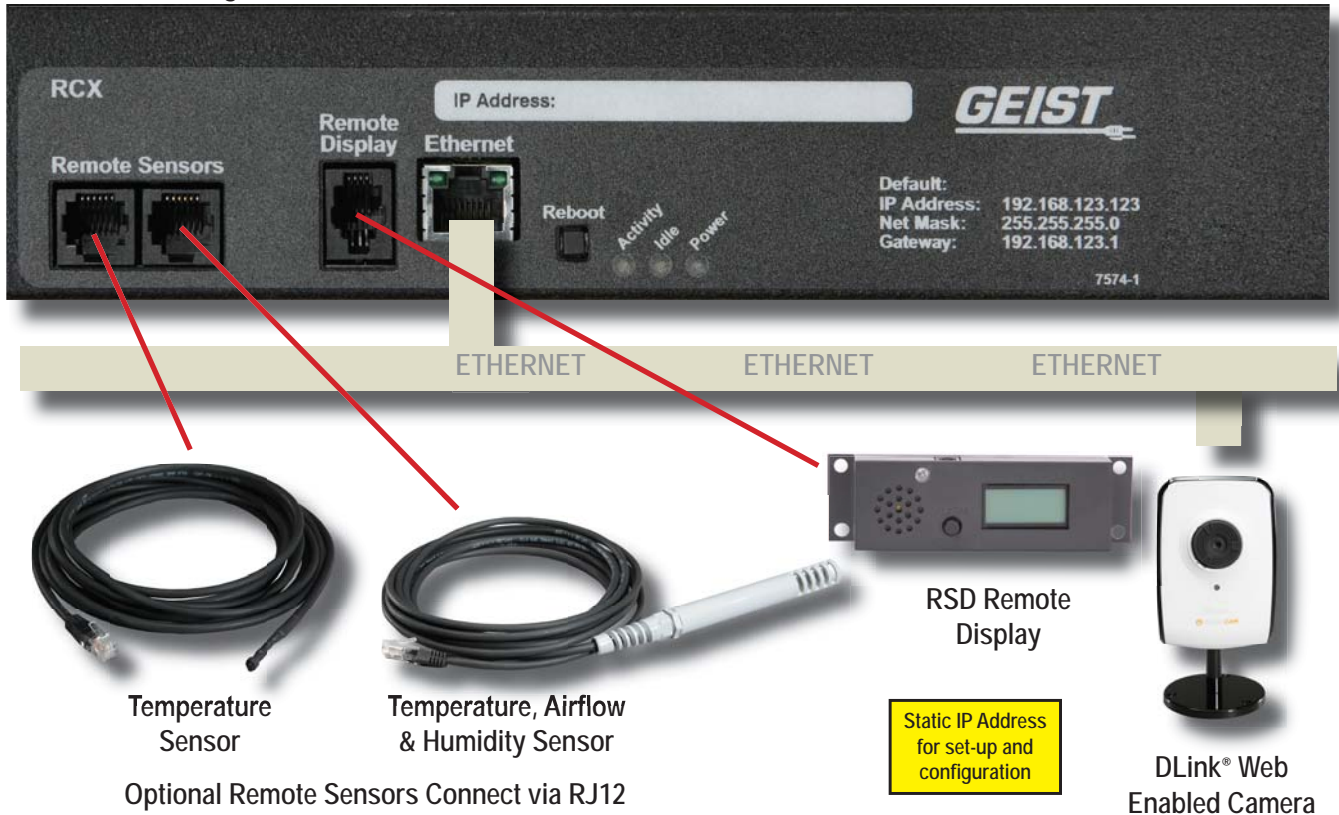


- Basic & Metered
- Monitored
- Switched
- Satellite
- Environmental
- Software
- Accessories
- Brackets
- Educational
- Resources



Connectivity Diagram & Compatibility Chart

Power Monitoring



Configuration

E-mail

SMTP Server:

SMTP Port:

Leaving the POP3 Server blank with the Username/Password filled in and using SMTP Port 465 enables ESMTTP/SSL.

"From" E-mail Address:

To E-mail Address 1:

To E-mail Address 2:

To E-mail Address 3:

To E-mail Address 4:

To E-mail Address 5:

POP3 Server:

POP3 Port:

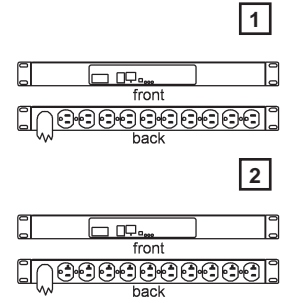
- Basic & Metered
- Monitored
- Switched
- Satellite
- Environmental
- Software
- Accessories
- Brackets
- Educational
- Resources

1.4 - 1.9kW 15 & 20 Amp, 120 Volt

- Basic & Metered
- Monitored
- Switched
- Satellite
- Environmental
- Software
- Accessories
- Brackets
- Educational
- Resources

- * Detailed monitoring spec available on page 90.
- UL® & c-UL® Listed 60950
- FCC Part 15 Class A

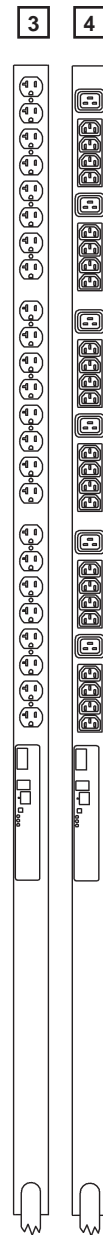
New RCXRN102-101D15SI5
New RCXRN102-102D20SI5
New RCXBN242-102D20SI5
New RCXBN302-102IN6SI5



LINE DRAWING	1	2	3	4
AMPS	15	20	20	20
VOLTS	120	120	120	120
TOTAL RECEPTACLE QTY	10	10	24	30
RECEPTACLE TYPE / QTY	5-15R / 10	5-20R / 10	5-20R / 24	C-13 / 24
RECEPTACLE TYPE / QTY	N/A	N/A	N/A	C-19 / 6
CIRCUIT BREAKER / ON-OFF SWITCH	NO	NO	NO	NO
POWER MONITORING - AMPS, VOLTS, POWER FACTOR, kW HOURS	YES	YES	YES	YES
MONITORING	AGGREGATE	AGGREGATE	AGGREGATE	AGGREGATE
ENVIRONMENTAL MONITORING - REMOTE SENSOR JACKS	2	2	2	2
ETHERNET CONNECTION AND LOCAL DISPLAY (RSD2X8)	YES	YES	YES	YES
10' POWER CORD	1	1	1	1
STRAIGHT-BLADE PLUG	5-15P	5-20P	5-20P	5-20P
TWIST-LOCK PLUG	OPT	OPT	OPT	OPT
ADJUSTABLE HORIZONTAL MOUNTING BRACKETS	YES	YES	N/A	N/A
FULL-LENGTH VERTICAL MOUNTING BRACKET	N/A	N/A	YES	YES
TOOLLESS MOUNTING HARDWARE CENTER TO CENTER SPACING (INCHES)	N/A	N/A	61.25 & 64.75	61.25 & 64.75
DIMENSIONS L/H (INCHES)	1.72	1.72	66.25	66.25
DIMENSIONS W	17	17	2	2
DIMENSIONS D	6.5	6.5	2.25	2.25

MODIFY TO MEET YOUR NEEDS

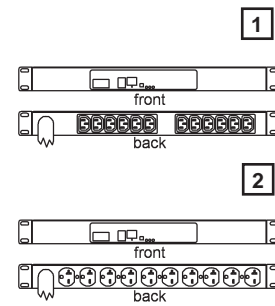
Cord Length (Feet) 02-15 (Plug Attached)	
Plug Type: SI = Straight-Blade / TL = Twist-Lock	



20 Amp, 120 or 208 Volt & 208 Volt, 1.9 - 3.3kW

- * Detailed monitoring spec available on page 90.
- UL® & c-UL® Listed 60950
- FCC Part 15 Class A

New RCXRN122-102C13C20
New RCXRN102-102D20ST6
New RCXBN242-102D20ST6
New RCXBN302-102IN6ST6



LINE DRAWING	1	2	3	4
AMPS	20	20	20	20
VOLTS	120 or 208	208	208	208
TOTAL RECEPTACLE QTY	12	10	24	30
RECEPTACLE TYPE / QTY	C-13 / 12	6-20R / 10	6-20R / 24	C-13 / 24
RECEPTACLE TYPE / QTY	N/A	N/A	N/A	C-19 / 6
CIRCUIT BREAKER / ON-OFF SWITCH	NO	NO	NO	NO
POWER MONITORING - AMPS, VOLTS, POWER FACTOR, KW HOURS	YES	YES	YES	YES
MONITORING	AGGREGATE	AGGREGATE	AGGREGATE	AGGREGATE
ENVIRONMENTAL MONITORING - REMOTE SENSOR JACKS	2	2	2	2
ETHERNET CONNECTION AND LOCAL DISPLAY (RSD2X8)	YES	YES	YES	YES
10' POWER CORD	1	1	1	1
STRAIGHT-BLADE PLUG	C-20	6-20P	6-20P	6-20P
TWIST-LOCK PLUG	N/A	OPT	OPT	OPT
ADJUSTABLE HORIZONTAL MOUNTING BRACKETS	YES	YES	N/A	N/A
FULL-LENGTH VERTICAL MOUNTING BRACKET	N/A	N/A	YES	YES
TOOLLESS MOUNTING HARDWARE CENTER TO CENTER SPACING (INCHES)	N/A	N/A	61.25 & 64.75	61.25 & 64.75
DIMENSIONS L/H (INCHES)	1.72	1.72	66.25	66.25
DIMENSIONS W	17	17	2	2
DIMENSIONS D	6.5	6.5	2.25	2.25

MODIFY TO MEET YOUR NEEDS

Cord Length (Feet) 02-15 (Plug Attached)	
Plug Type: ST = Straight-Blade / TL = Twist-Lock	

- Basic & Metered
- Monitored
- Switched
- Satellite
- Environmental
- Software
- Accessories
- Brackets
- Educational
- Resources

5.8kW 20 Amp, 3 Phase

- Basic & Metered
- Monitored
- Switched
- Satellite
- Environmental
- Software
- Accessories
- Brackets
- Educational
- Resources

- All 3 phase and multi-input units have color-coded receptacle configurations or labeling for easy identification and load balancing
- * Detailed monitoring spec available on page 90.
- UL® & c-UL® Listed 60950
- FCC Part 15 Class A

New
New
New
New

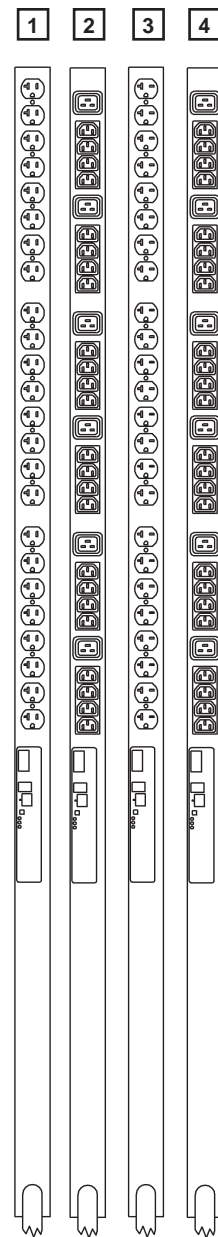
RCXBN243-102D20TL21

 RCXBN303-102IN6TL21

 RCXBN248-102D20TL21

 RCXBN308-102IN6TL21

LINE DRAWING	1	2	3	4
AMPS	20 x 3~	20 x 3~	20 x 3~	20 x 3~
VOLTS	120	120	208	208
TOTAL RECEPTACLE QTY	24	30	24	30
RECEPTACLE TYPE / QTY	5-20R / 24	C-13 / 24	6-20R / 24	C-13 / 24
RECEPTACLES PER PHASE	8	8	N/A	N/A
RECEPTACLES PER PHASE COMBINATION	N/A	N/A	8	8
RECEPTACLE TYPE / QTY	N/A	C-19 / 6	N/A	C-19 / 6
RECEPTACLES PER PHASE	N/A	2	N/A	N/A
RECEPTACLES PER PHASE COMBINATION	N/A	N/A	N/A	2
CIRCUIT BREAKER / ON-OFF SWITCH	NO	NO	NO	NO
POWER MONITORING - AMPS, VOLTS, POWER FACTOR, KW HOURS	YES	YES	YES	YES
MONITORING	PHASE (X,Y,Z)	PHASE (X,Y,Z)	CIRCUIT (XY,YZ,ZX)	CIRCUIT (XY,YZ,ZX)
ENVIRONMENTAL MONITORING - REMOTE SENSOR JACKS	2	2	2	2
ETHERNET CONNECTION AND LOCAL DISPLAY (RSD2X8)	YES	YES	YES	YES
10' POWER CORD	1	1	1	1
TWIST-LOCK PLUG	L21-20P	L21-20P	L21-20P	L21-20P
FULL-LENGTH VERTICAL MOUNTING BRACKET	YES	YES	YES	YES
TOOLLESS MOUNTING HARDWARE CENTER TO CENTER SPACING (INCHES)	61.25 & 64.75	61.25 & 64.75	61.25 & 64.75	61.25 & 64.75
DIMENSIONS L (INCHES)	66.25	66.25	66.25	66.25
DIMENSIONS W	2	2	2	2
DIMENSIONS D	2.25	2.25	2.25	2.25



MODIFY TO MEET YOUR NEEDS

Cord Length (Feet) [02-15](#) (Plug Attached)

30 Amp, 120 & 208 Volt, 2.9 - 5kW

New **New** **New** **New**

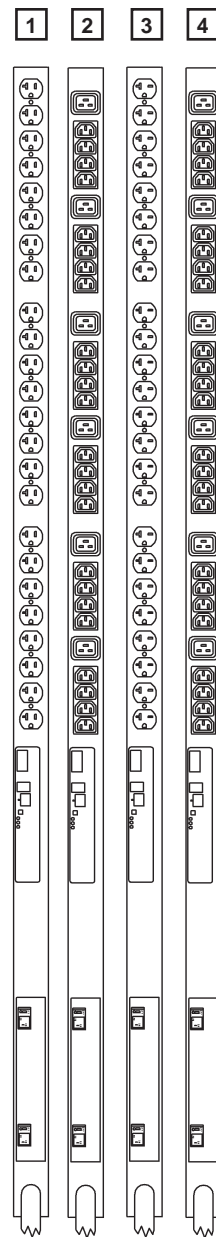
RCXB240-103D20TL5 *RCXB300-103IN6TL5* *RCXB240-103D20TL6* *RCXB300-103IN6TL6*

- * Detailed monitoring spec available on page 90.
- UL® & c-UL® Listed 60950
- FCC Part 15 Class A

LINE DRAWING	1	2	3	4
AMPS	30	30	30	30
VOLTS	120	120	208	208
TOTAL RECEPTACLE QTY	24	30	24	30
RECEPTACLE TYPE / QTY	5-20R / 24	C-13 / 24	6-20R / 24	C-13 / 24
RECEPTACLES PER BREAKER	12	12	12	12
RECEPTACLE TYPE / QTY	N/A	C-19 / 6	N/A	C-19 / 6
RECEPTACLES PER BREAKER	N/A	3	N/A	3
MAGNETIC CIRCUIT BREAKER / ON-OFF SWITCH WITH INTEGRAL GUARD	YES	YES	YES	YES
BREAKER AMPERAGE / QTY	20 / 2	20 / 2	20 / 2	20 / 2
BREAKER POLE CONFIGURATION	SINGLE	SINGLE	DOUBLE	DOUBLE
POWER MONITORING - AMPS, VOLTS, POWER FACTOR, KW HOURS	YES	YES	YES	YES
MONITORING	CIRCUIT / BREAKER	CIRCUIT / BREAKER	CIRCUIT / BREAKER	CIRCUIT / BREAKER
ENVIRONMENTAL MONITORING - REMOTE SENSOR JACKS	2	2	2	2
ETHERNET CONNECTION AND LOCAL DISPLAY (RSD2X8)	YES	YES	YES	YES
10' POWER CORD	1	1	1	1
TWIST-LOCK PLUG	L5-30P	L5-30P	L6-30P	L6-30P
FULL-LENGTH VERTICAL MOUNTING BRACKET	YES	YES	YES	YES
TOOLLESS MOUNTING HARDWARE CENTER TO CENTER SPACING (INCHES)	61.25 & 64.75	61.25 & 64.75	61.25 & 64.75	61.25 & 64.75
BREAKER DOGHOUSE - 1.44" DEPTH	YES	YES	YES	YES
DIMENSIONS L (INCHES)	66.25	66.25	66.25	66.25
DIMENSIONS W	2	2	2	2
DIMENSIONS D	2.25	2.25	2.25	2.25

MODIFY TO MEET YOUR NEEDS

Cord Length (Feet) [02-15](#) (Plug Attached)



- Basic & Metered
- Monitored
- Switched
- Satellite
- Environmental
- Software
- Accessories
- Brackets
- Educational
- Resources

8.6kW 30 Amp, 3 Phase

Basic & Metered

Monitored

Switched

Satellite

Environmental

Software

Accessories

Brackets

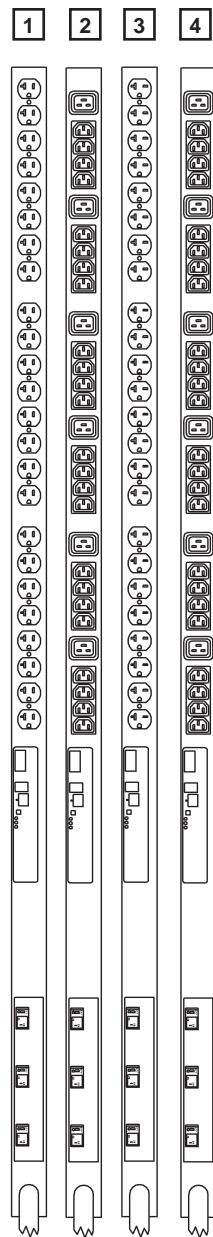
Educational

Resources

- * Detailed monitoring spec available on page 90.
- UL® & c-UL® Listed 60950
- FCC Part 15 Class A

New RCXB243-103D20TL21
New RCXB303-103IN6TL21
New RCXB248-103D20TL21
New RCXB308-103IN6TL21

LINE DRAWING	1	2	3	4
AMPS	30 x 3~	30 x 3~	30 x 3~	30 x 3~
VOLTS	120 / 208 WYE	120 / 208 WYE	120 / 208 WYE	120 / 208 WYE
OUTPUT VOLTAGE FOR 3 PHSE INPUT UNITS	120	120	208	208
TOTAL RECEPTACLE QTY	24	30	24	30
RECEPTACLE TYPE / QTY	5-20R / 24	C-13 / 24	6-20R / 24	C-13 / 24
RECEPTACLES PER BREAKER & PHASE	8	8	N/A	N/A
RECEPTACLES PER BREAKER & PHASE COMBINATION	N/A	N/A	8	8
RECEPTACLE TYPE / QTY	N/A	C-19 / 6	N/A	C-19 / 6
RECEPTACLES PER BREAKER & PHASE	N/A	2	N/A	N/A
RECEPTACLES PER BREAKER & PHASE COMBINATION	N/A	N/A	N/A	2
MAGNETIC CIRCUIT BREAKER / ON-OFF SWITCH WITH INTEGRAL GUARD	YES	YES	YES	YES
BREAKER AMPERAGE / QTY	20 / 3	20 / 3	20 / 3	20 / 3
BREAKER POLE CONFIGURATION	DOUBLE	DOUBLE	DOUBLE	DOUBLE
POWER MONITORING - AMPS, VOLTS, POWER FACTOR, KW HOURS	YES	YES	YES	YES
MONITORING	PHASE / BREAKER (X,Y,Z)	PHASE / BREAKER (X,Y,Z)	CIRCUIT / BREAKER (XY,YZ,ZX)	CIRCUIT / BREAKER (XY,YZ,ZX)
ENVIRONMENTAL MONITORING - REMOTE SENSOR JACKS	2	2	2	2
ETHERNET CONNECTION AND LOCAL DISPLAY (RSD2X8)	YES	YES	YES	YES
10' POWER CORD	1	1	1	1
TWIST-LOCK PLUG	L21-30P	L21-30P	L21-30P	L21-30P
FULL-LENGTH VERTICAL MOUNTING BRACKET	YES	YES	YES	YES
TOOLLESS MOUNTING HARDWARE CENTER TO CENTER SPACING (INCHES)	61.25 & 64.75	61.25 & 64.75	61.25 & 64.75	61.25 & 64.75
BREAKER DOGHOUSE - 1.44" DEPTH	YES	YES	YES	YES
DIMENSIONS L (INCHES)	66.25	66.25	66.25	66.25
DIMENSIONS W	2	2	2	2
DIMENSIONS D	2.25	2.25	2.25	2.25



MODIFY TO MEET YOUR NEEDS
 Cord Length (Feet) 02-15 (Plug Attached)