

smc[®] PLATINUM[™] HDC NETWORK CABINET

Ideal for hi-density storage of switches, routers and other network appliances

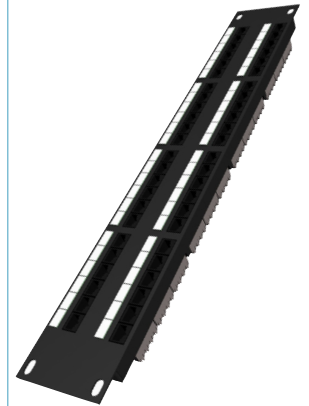
e-Systems
Group | EDP
SMC

Platinum HDC Network Cabinet addresses the complexity of today's data center management needs for Network Switches.

The Platinum HDC Network Cabinet meets or exceeds all third part 19" EIA 310-D Cabinet requirements for power, cabling, and ventilation. Platinum HDC Network Cabinet provides a State-of-the-Art design to manage network switches and high density cabling in today's and tomorrow's data center featuring superior thermal management in hot and cold aisle applications.



Platinum HDC Network Cabinet



Structural Frame



Optional Vertical Cable Management Kit

Key Performance Features

Convenience

Installation Height: Standard 79" height fits through standard doors without tilting.

Door Hinges: Standard concealed hinges

Numbered U Positions: Labeled U positions on rack mounting rails simplify the installation of rack mounted devices.

Numbered Rails: Front-to-rear rails labeled in inches make adjusting the rear rails simple.

Extra Depth: 6" or 12" deep corner posts maximize power and cable management, while allowing easy access from the interior.

Shipment: Units ship fully assembled, reducing installation time.

Protection

Security: Field upgrades to Secure or Smart Technology provide keypad entry and remote monitoring (keeps an Audit Trail) when security is a must.

Locking: Doors and end panels feature anti-pick, tubular locks, ensuring data integrity.

Structural Stability: A proven frame design, welded heavy gauge front-to-rear rails and heavy-duty steel casters provide 2000 lb. static and dynamic ratings.

Temperature Display: Optional temperature display provides easy to read monitoring of interior temperature.

Warranty: A lifetime warranty protects the investment.

Serviceability

End Panels: Quick release end panels allow fast and easy access to the interior.

Base Plate: Optional removable base plate offers a large opening for easy access, ventilation or extra storage.

Leveling Feet: Easy access leveling feet provide fast adjustment with or without servers installed.

Reversible Doors: Door opening direction can be reversed on location as requirements change.

Top Plate: Modular design allows for numerous applications - Cooling and Cabling Troughs

Flexibility

Versatile: The Platinum HDC-NET is available in both 42U and 44U configurations to meet specific needs (42" and 48" Depths).

Expandable: Platinum HDC-NET Cabinet accepts an additional 6" power and cable management frame which provides ample space when the application requires it.

Copper or Fiber Cable Access: Multiple cable openings and troughs throughout, combined with optional fiber optic grommets, offer versatility in cable management and access where it's really needed.

Scalability: The uniquely designed corner post attachment allows ganging from the interior, simplifying row expansion.

Ventilation: Optional top mounted or rear door fans provide options when choosing the correct ventilation solution.

Data Center Solutions

www.e-systemsgroup.com

800.432.1337

Specifications

- Exceeds all third party 19" EIA 310-D Enclosure requirements for power, cabling, and ventilation.
- Front to Back Compatible with Existing Platinum Frames and Components
- Smart Technology Option Compatible
- All Steel Construction fabricated from 12 & 14 Ga CRS
- (4) Leveling Feet Standard
- Maximum Load Capacity is 2000 lbs with Leveling Feet
- Open Base Design
- Open Top
- Reinforced base plate to accommodate optional Seismic mounting ability
- Welded in Front to Rear Rail mounting adjustment mechanisms
- Front to Rears are numbered in 1" increments
- Doors can be mounted right or left hinged and can be changed in the field without any special tools.
- Both Front and Rear Doors are of welded frame construction and come with Mesh that provide 63% open area of ventilation
- Concealed Door Hinges standard
- Cam Locks on Doors Standard

Popular Options

- Optional Switch Ventilation Packages Available
- Rails (Sq Cage Nut, Tapped, Markings, etc.)
- Modular Bases and Modular Tops
- Numerous Cable Management Options
- Power Features
- Side Panels
- Extension Frame for 42" Frames
- Grounding



Data Center Solutions: Enclosures, Technology + Services

e-Systems Group, LLC - Manufacturing
100 Progress Parkway
Conklin, NY 13748
800.432.1337

e-Systems Group, LLC - Western Showroom Location
1250 West 124th Avenue
Westminster, CO 80234
800.432.1337