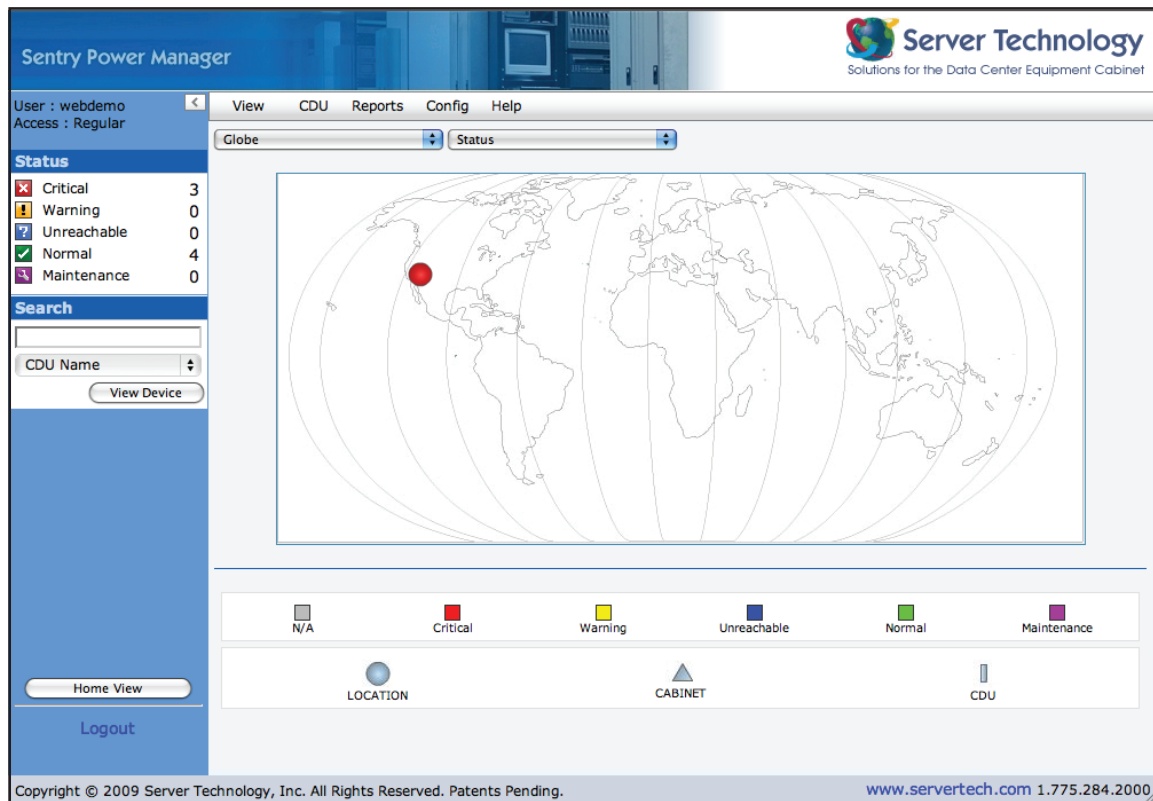


Sentry™ Power Manager

Manage Multiple Cabinet Power Distribution Units (CDUs) in Multiple Locations

Key Features

- > View your entire network of CDU's from a global view down to the rack level
- > Auto-Discovers all your Sentry CDU devices connected to your IP network
- > Access Interface via Standard Network Browser
- > Outlet Grouping and Clusters: Group or Cluster outlets for remote reboot and power measurement information on a single CDU, across linked CDU's, or across IP addresses
- > Determine Efficiency Metrics: PUE and DCiE from The Green Grid and SI-POM and H-POM for The Uptime Institute
- > Logs: discovery, user login, user actions, alarm status
- > Trending: Graph temperature, humidity, infeed load, infeed power, system watts/unit area & system total power
- > Integrated Remote Management of Sentry CDU's to cycle power and reboot selected devices
- > Local and global alarm notification and acknowledgement
- > Real-time alarm notification
- > Multiple Views: Status, current load, power, temperature, humidity & capacity
- > Ability to import background images
- > Multiple user levels and permissions including support for LDAP
- > Monitor and View Environmental Status



Sentry Power Manager

User : webdemo
Access : Regular

View CDU Reports Config Help

Globe Status

| Status | Count |
|-------------|-------|
| Critical | 3 |
| Warning | 0 |
| Unreachable | 0 |
| Normal | 4 |
| Maintenance | 0 |

Search

CDU Name

View Device

Home View Logout

Copyright © 2009 Server Technology, Inc. All Rights Reserved. Patents Pending. www.servertech.com 1.775.284.2000

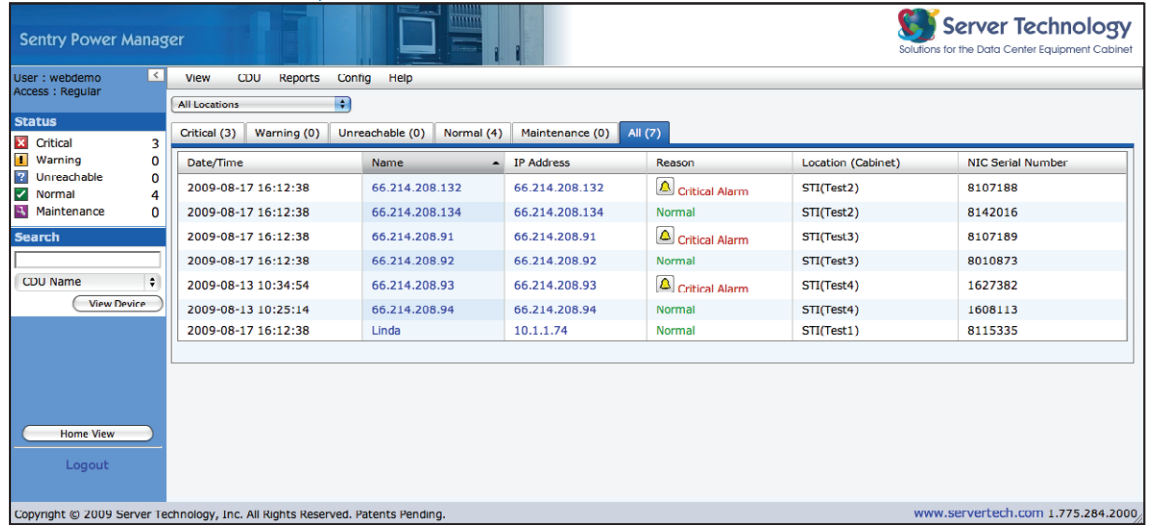
'Quickly drill down from a global view to the rack level'

Do you have multiple Sentry™ CDUs in one or more locations that you would like to access from one central point? Would you like one central location where all alarms can be viewed and logged for reporting, e-mail or SNMP trap notifications? No problem!

Our Sentry Power Manger (SPM) product is capable of monitoring and managing multiple Sentry devices in IP-based enterprise networks. SPM provides a global view of all Sentry CDUs with the ability to view devices based on their temperature, humidity, current and device status. Besides managing and monitoring all alarm conditions, this information can also be used to provide reporting and trending information for display within SPM or integrated with your existing Building Management System (BMS) or other system.

Real-time active alarm system

- > Monitor all active alarms within Sentry Power Manager
- > Monitor and manage CDU's from within SPM



Sentry Power Manager

User: webdemo
Access: Regular

Status Summary:

- Critical: 3
- Warning: 0
- Unreachable: 0
- Normal: 4
- Maintenance: 0

| Date/Time | Name | IP Address | Reason | Location (Cabinet) | NIC Serial Number |
|---------------------|----------------|----------------|----------------|--------------------|-------------------|
| 2009-08-17 16:12:38 | 66.214.208.132 | 66.214.208.132 | Critical Alarm | STI(Test2) | 8107188 |
| 2009-08-17 16:12:38 | 66.214.208.134 | 66.214.208.134 | Normal | STI(Test2) | 8142016 |
| 2009-08-17 16:12:38 | 66.214.208.91 | 66.214.208.91 | Critical Alarm | STI(Test3) | 8107189 |
| 2009-08-17 16:12:38 | 66.214.208.92 | 66.214.208.92 | Normal | STI(Test3) | 8010873 |
| 2009-08-13 10:34:54 | 66.214.208.93 | 66.214.208.93 | Critical Alarm | STI(Test4) | 1627382 |
| 2009-08-13 10:25:14 | 66.214.208.94 | 66.214.208.94 | Normal | STI(Test4) | 1608113 |
| 2009-08-17 16:12:38 | Linda | 10.1.1.74 | Normal | STI(Test1) | 8115335 |

Copyright © 2009 Server Technology, Inc. All Rights Reserved. Patents Pending. www.servertech.com 1.775.284.2000

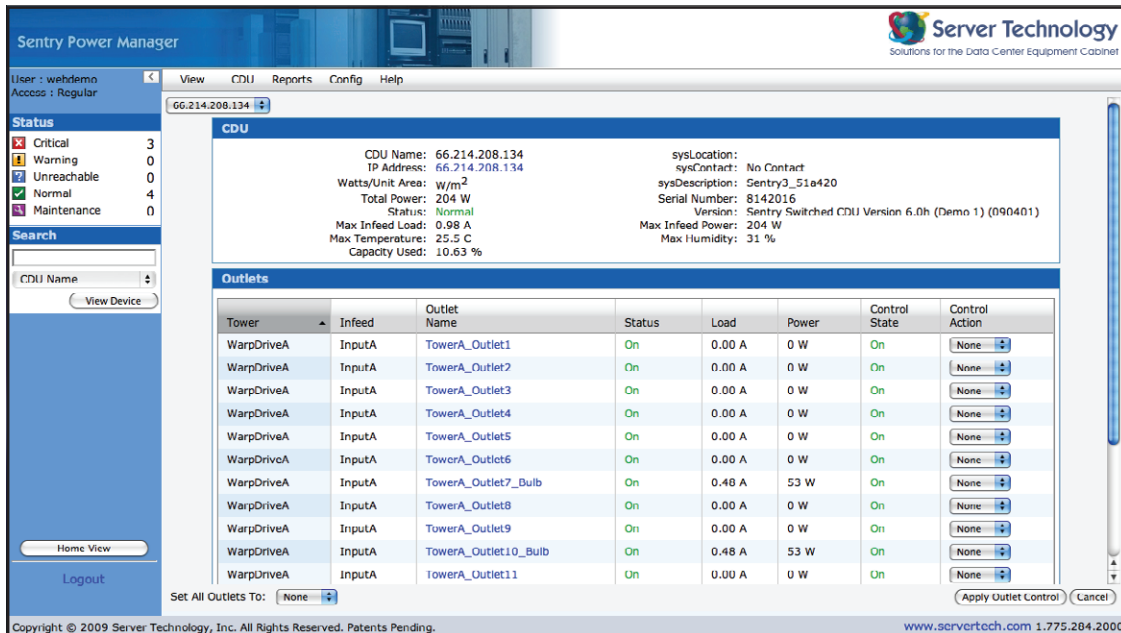
- > Quickly drill down from global view to rack-level



The sequence shows the user navigating from a global map view to a satellite view of a data center, and finally to a detailed rack-level view of a CDU.

- > View cabinet level information including:
 - Total Power
 - Power Density
 - Temperature
 - Humidity
 - Capacity Used

View cabinet conditions from one screen



Sentry Power Manager

User: webdemo
Access: Regular

CDU Name: 66.214.208.134

Summary:

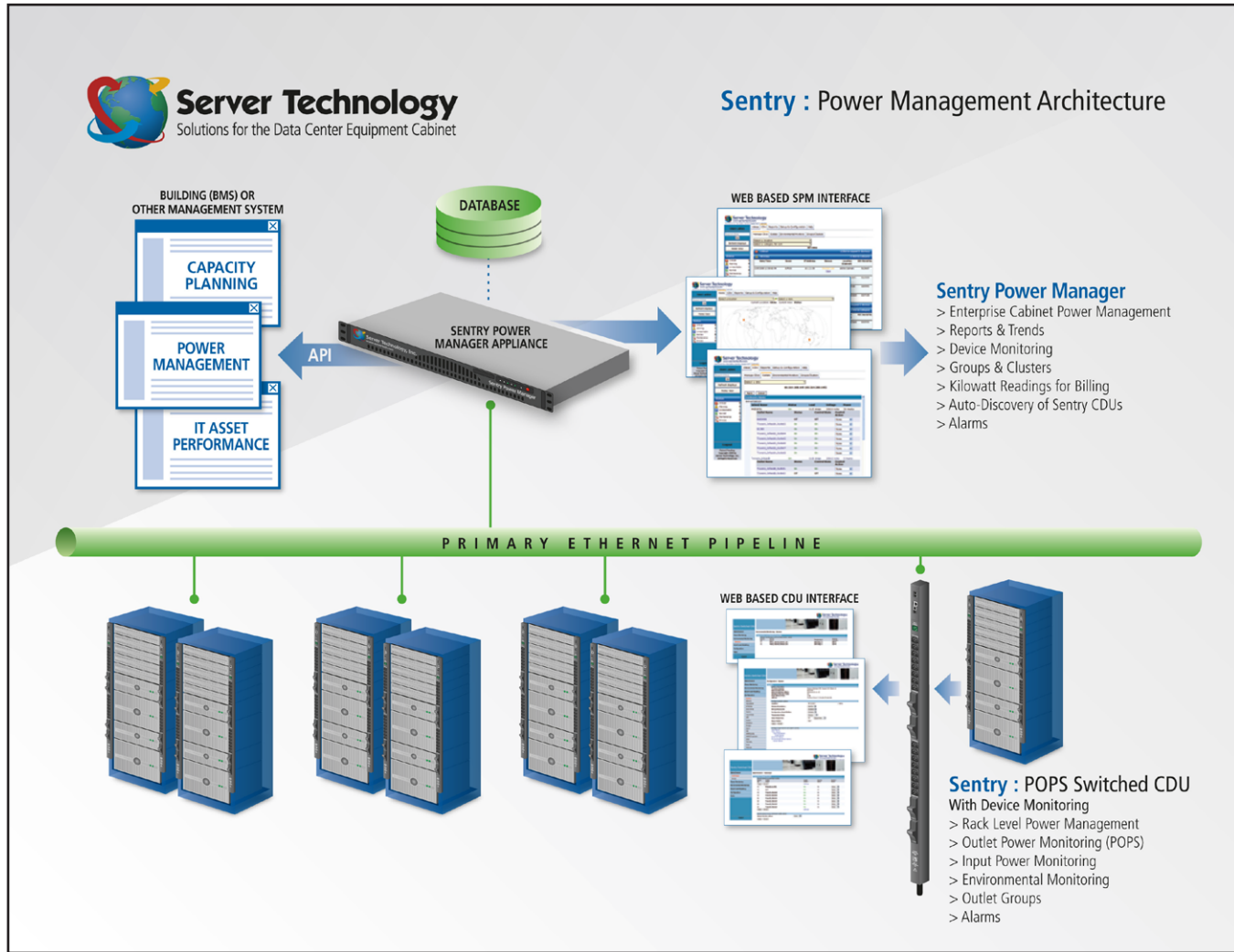
- sysLocation: No Contact
- sysContact: No Contact
- sysDescription: Sentry3_51e420
- Serial Number: 8142016
- Version: Sentry Switched CDU Version 6.0h (Demo 1) (090401)
- Max Infeed Load: 0.98 A
- Max Infeed Power: 204 W
- Max Temperature: 25.5 C
- Max Humidity: 31 %
- Capacity Used: 10.63 %

| Tower | Infeed | Outlet Name | Status | Load | Power | Control State | Control Action |
|------------|--------|----------------------|--------|--------|-------|---------------|----------------|
| WarpDriveA | InputA | TowerA_Outlet1 | On | 0.00 A | 0 W | On | None |
| WarpDriveA | InputA | TowerA_Outlet2 | On | 0.00 A | 0 W | On | None |
| WarpDriveA | InputA | TowerA_Outlet3 | On | 0.00 A | 0 W | On | None |
| WarpDriveA | InputA | TowerA_Outlet4 | On | 0.00 A | 0 W | On | None |
| WarpDriveA | InputA | TowerA_Outlet5 | On | 0.00 A | 0 W | On | None |
| WarpDriveA | InputA | TowerA_Outlet6 | On | 0.00 A | 0 W | On | None |
| WarpDriveA | InputA | TowerA_Outlet7_Bulb | On | 0.48 A | 53 W | On | None |
| WarpDriveA | InputA | TowerA_Outlet8 | On | 0.00 A | 0 W | On | None |
| WarpDriveA | InputA | TowerA_Outlet9 | On | 0.00 A | 0 W | On | None |
| WarpDriveA | InputA | TowerA_Outlet10_Bulb | On | 0.48 A | 53 W | On | None |
| WarpDriveA | InputA | TowerA_Outlet11 | On | 0.00 A | 0 W | On | None |

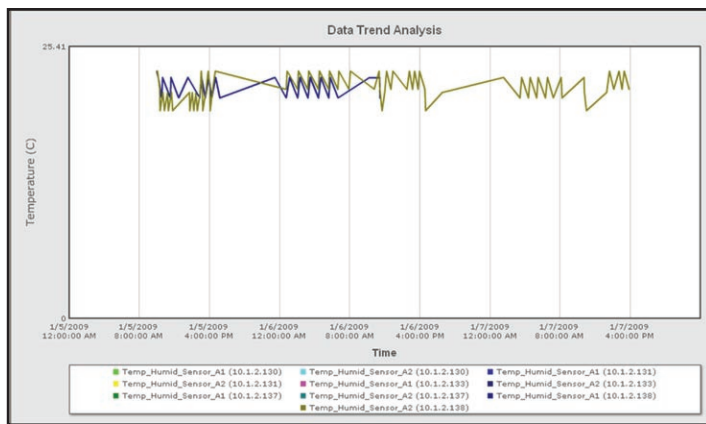
Set All Outlets To: None

Copyright © 2009 Server Technology, Inc. All Rights Reserved. Patents Pending. www.servertech.com 1.775.284.2000

Power Information and Management



Trends/ Graphs:



Sentry Power Manager Appliance



Technical Specifications

Ease-of-Use:

- > Auto-discovers each CDU for easy configuration
- > Easily create a user interface that mirrors the physical deployment of the data center
- > Quickly drill down from a global perspective to the rack's actual physical location for power and environmental information or if there is a problem (quickly identify the alarm and the physical location of the CDU)

Multiple Reporting Options:

- > Reporting capabilities to produce reports on critical management parameters such as a temperature, humidity, current load and energy consumption
- > Reports on Current and Power providing the power consumption of each input, total for the rack and/or per square foot (meters) of the rack

Trends/Graphs:

- > Period: 24-hours to 3 years
- > Create trends based on Temperature, Humidity, In-feed Load, In-feed Power, System Watts/unit area, and System Total Power
- > Up to 12 parameters can be shown on a single trend

Appliance Based Architecture (Standard Model):

- > Form Factor: 1U
- > Processor: Intel Core 2 Duo 2.33GHz
- > Memory: DDR2 2GB
- > Hard Drive: 250GB

Appliance Based Architecture (Redundant Model):

- > Form Factor: 2U
- > Processor: Intel Core 2 Duo 3.0 GHz
- > Memory: 2 x 2GB PC3-10600
- > Hard Drive: 2 x 500GB, Raid 1 mirror
- > Power: 450W (1 +1) Redundant

Compatibility:

- > Server Technology Sentry CDUs with firmware 5.3x or later
- > Competitive PDUs (Contact Server Technology for more information)

On-Demand Accessibility:

- > Real-time view of all active system alarms
- > Anytime, anywhere web-based views
- > Manage thousands of CDUs from a single console

Groups and Clusters:

- > Create Groups to Group outlets per device, groups of devices (application), or per cabinet
- > Create Clusters to group outlets across IP addresses (cabinets), rows of cabinets or the whole Data Center
- > Groups and Clusters can be used to reboot or power down a single device or a row of cabinets
- > Power information can be provided for billing per Group and Clusters such as kW and kW-h for a single device, groups of devices, a cabinet, rows of cabinets or the whole data center
- > kW Information can be used to determine data center efficiency metrics like PUE and DCiE from The Green Grid

Web Browsers Supported:

- > Microsoft Internet Explorer 7.0 or later
- > Mozilla Firefox 1.5 or later



1U (Standard) SPM Appliance



Server Technology

HEADQUARTERS - NORTH AMERICA
Server Technology, Inc.
1040 Sandhill Drive
Reno, NV 89521
United States
1.775.284.2000 Tel
1.775.284.2065 Fax
sales@servertech.com
www.servertech.com
www.servertechblog.com

EMEA
Server Technology Intl
Sienna Court
The Broadway
Maidenhead
Berkshire
SL6 1NJ
United Kingdom
+44 (0) 1628 509053 Tel
+44 (0) 1628 509100 Fax
salesintl@servertech.com

APAC
Server Technology Intl
37th Floor, Singapore Land Tower
50 Raffles Place
Singapore 048623
+65 (0) 6829 7008 Tel
+65 (0) 6234 4574 Fax
salesintl@servertech.com